

Your guide to QPcard

QPcard THE KEY TO COLOR

QPcard - essential for professionals as well as amateur photographers. QPcard - used for portrait, studio and product photography.

QPcard - used also by the press, the police, hospitals and museums. QPcard - can also be used for films to be scanned.

QPcard - is used outdoors, in artificial light, by daylight and with flash.



1 Place QPcard on the object and make sure it is being lit by the same light as the main object.

Point the card towards the camera and avoid reflecting light on the card.



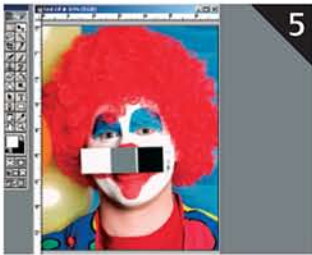
2 Select a suitable white balance setting in the camera. Avoid "Auto".



3 Expose a reference image with QPcard on the object.



4 Remove QPcard and expose the remaining images in the same lighting conditions.



5 Open the reference image in Adobe Photoshop.



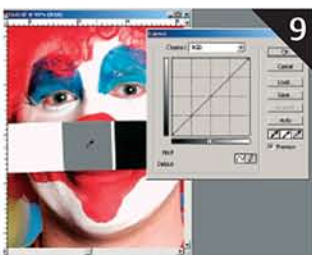
6 Select a section of the grey square on QPcard using the Marquee Tool (m).



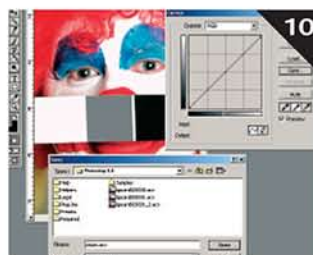
7 Apply Gaussian Blur by choosing "Filter", "Blur", "Gaussian Blur". Choose radius 10. Deselect the section by using "Select", "Deselect".



8 Select "Sample size: 5 by 5 Average" with the Eyedropper tool (i).



9 Select "Image", "Adjustments", "Curves". Select the grey eyedropper in the middle and click in the middle of the grey field on QPcard. The image will be color balanced and red, green and blue will get the same values in the grey field. All colors will be corrected simultaneously.



10 Save the correction curve by clicking "Save" in the dialogue box "Curves". Open the remaining images and correct them by clicking "Load..." in the dialogue box "Curves" and load the saved correction curve. Click "OK".

Winner of Swedish Innovation Award 1999

Pat.No. 9903494-4

www.qpcard.com

ARGRAPH
CORP

Address: 111 Asia Place, Carlstadt, NJ 07072 Phone: (201) 939-7722
www.argraph.com